

APPALACHIAN ELECTRIC COOPERATIVE  
Temporary Underground Service Guideline

APPALACHIAN ELECTRIC COOPERATIVE

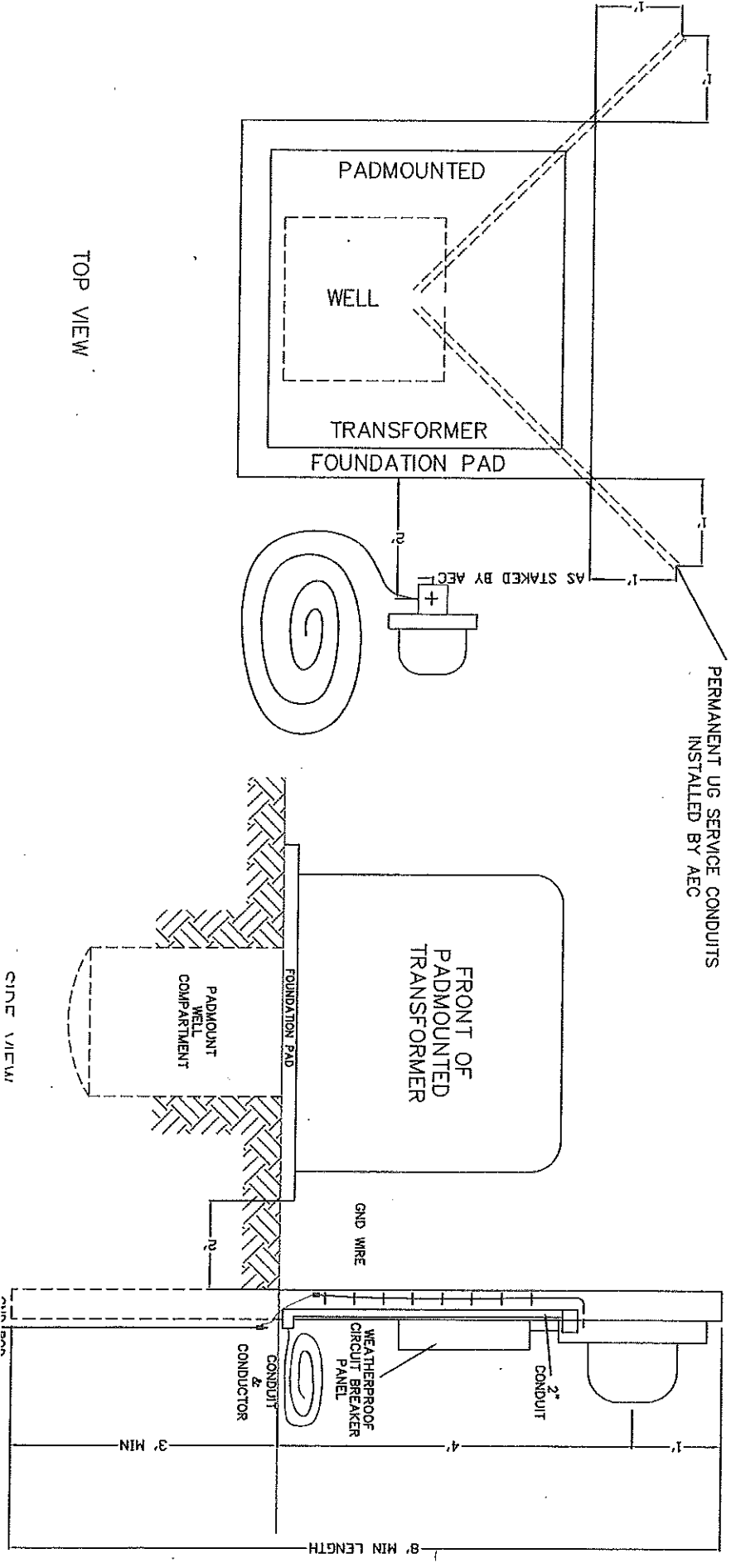
DESCRIPTION TEMPORARY SERVICE GUIDELINE FOR PADMOUNTED TRANSFORMER

BY CKD APR DATE 010276 REV 101000 USE PAGE

A0031

NOTES

1. This guideline is solely intended to provide the AEC requirements for an underground temporary service connection. Some of these requirements exceed the National Electrical Code (NEC) standards and therefore are shown here. The temporary service installation must meet both NEC and AEC requirements for connection. This guideline is not intended to replace or even convey the requirements of the NEC.
2. The hole for the UG temporary service pole is to be **HAND DUG** at the side of the transformer installation as marked with a stake by AEC.
3. An 8-foot ground rod is to be installed and connected to the meter base.
4. The temporary service pole installation is to be examined by the State Deputy Wiring Inspector and sealed as "passed" prior to being connected by AEC.
5. The temporary service conductors are to meet the National Electrical Safety Code. They are to be installed in flexible conduit with 6 feet of conduit and 16 feet of conductor coiled at the earth surface and the connection to the AEC system is to be made by AEC.
6. All temporary services are to be 120/240 volt, 3 wire, single phase.
7. The neutral service conductor is to be clearly identified.



TOP VIEW

SIDE VIEW